

**EN**

1x 1x 1x 2x

1x 1x 3x 3x

CE

**A**

950 mm

! off

i IP44

**B**

**C**

i

**D**

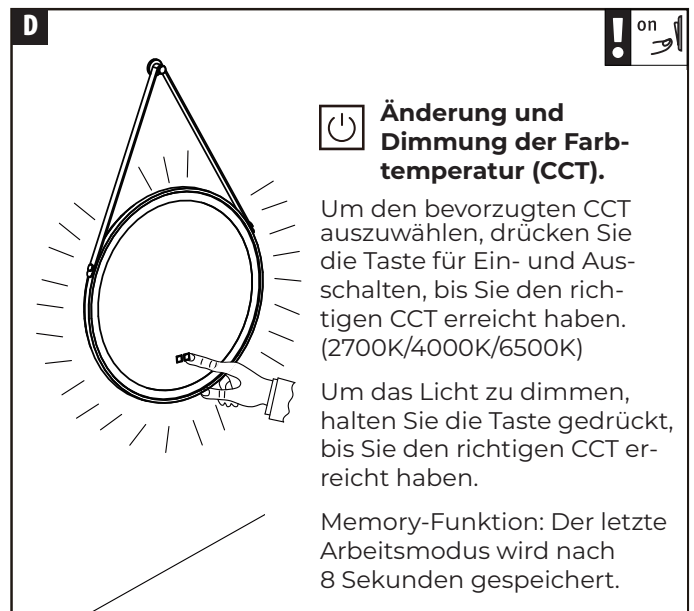
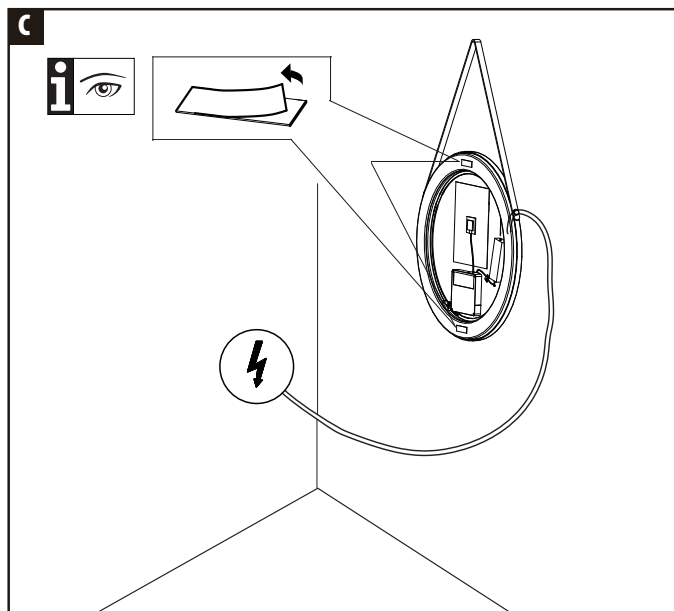
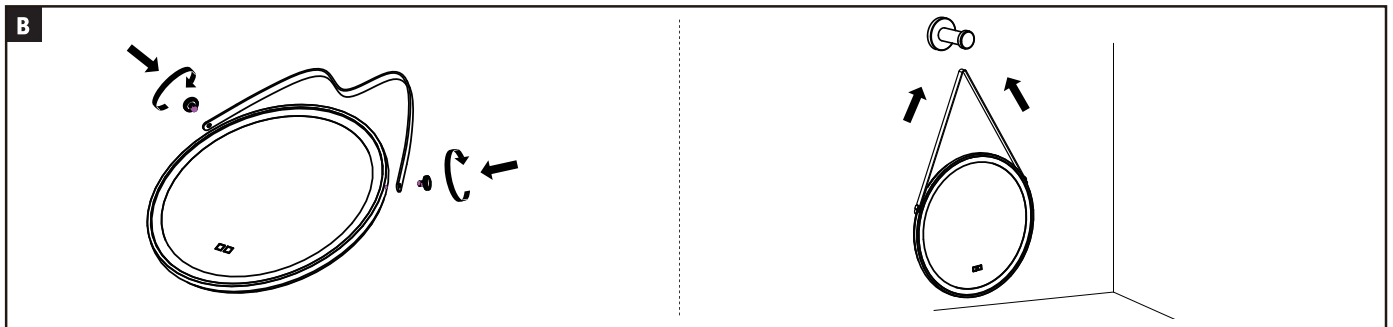
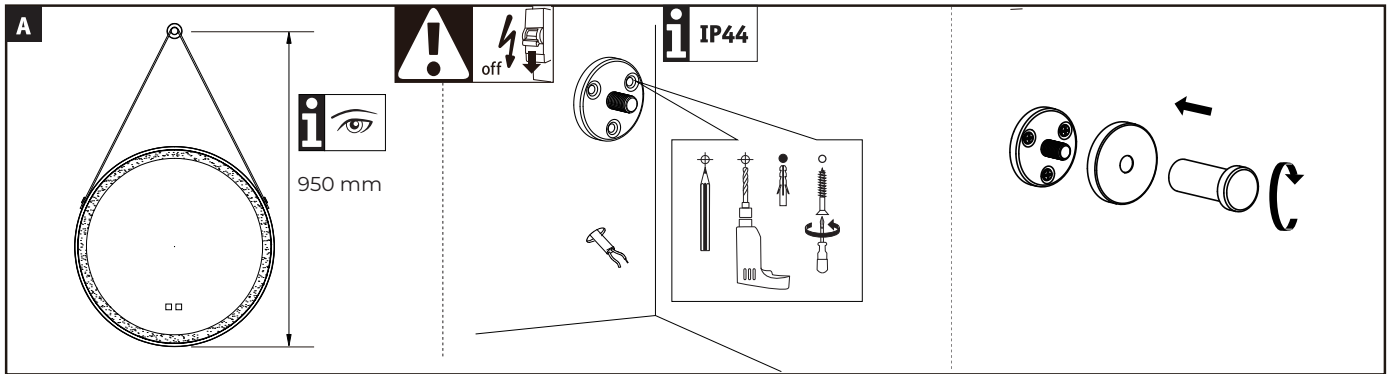
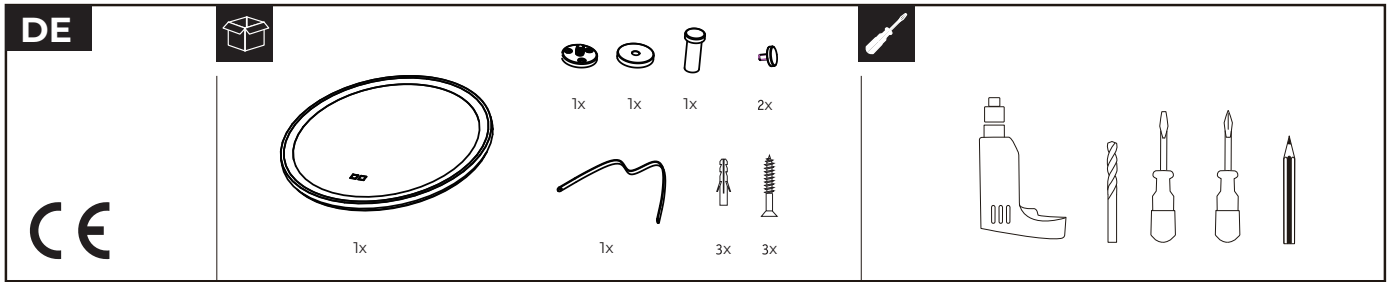
! on

**Colour Temperature (CCT) Change and Dimming**

To select the preferred CCT, press the button turn the light on/off until the correct CCT is achieved. (2700K/4000K/6500K).  
To dim the light, hold down the button until desired brightness is achieved  
Memory function: The last working mode will be remembered after 8 seconds.

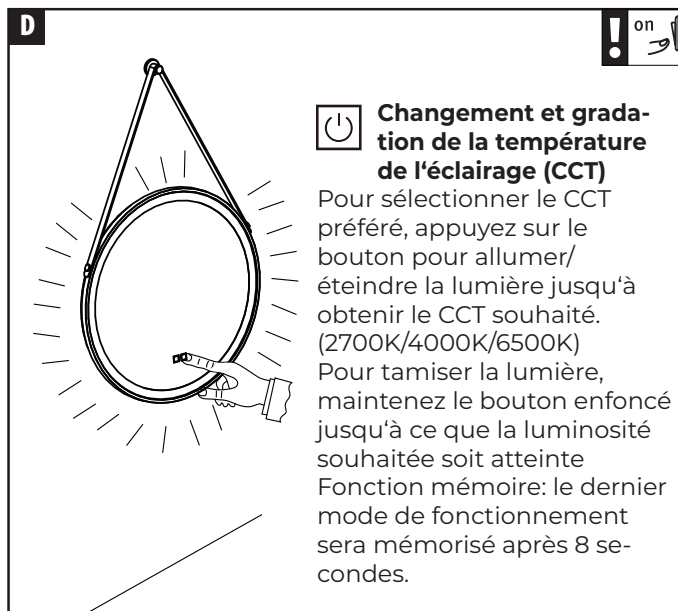
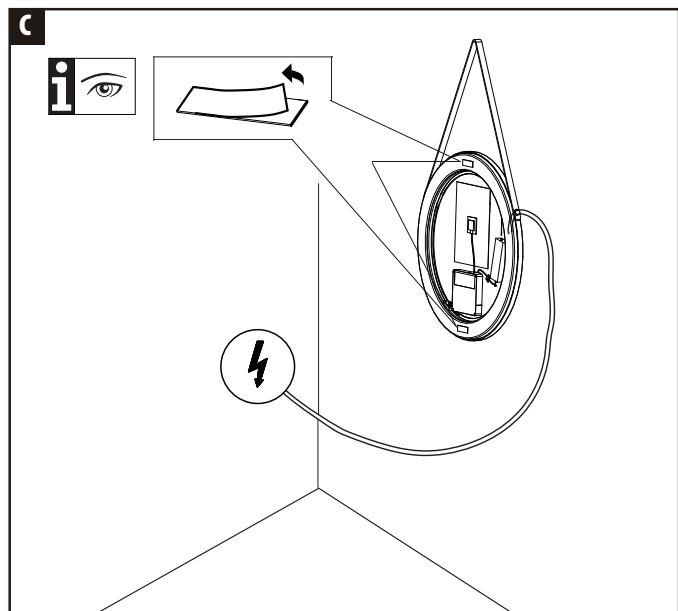
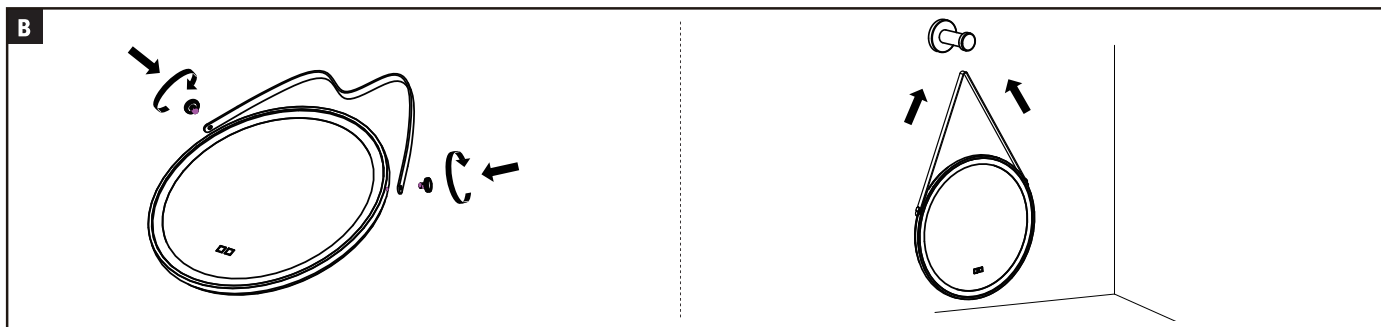
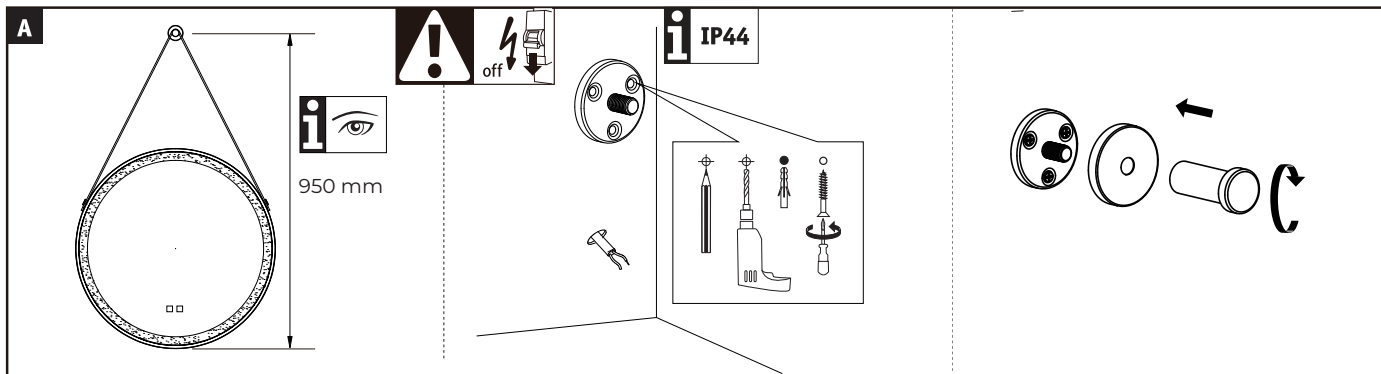
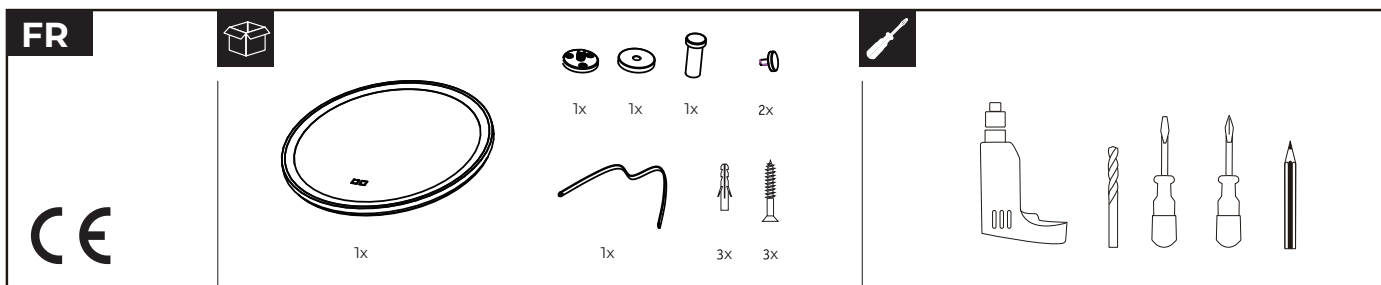
**Defogger**

Defogger on (short touch)  
Defogger off (short touch)  
Defogger will switch off automatically after 30 minutes.



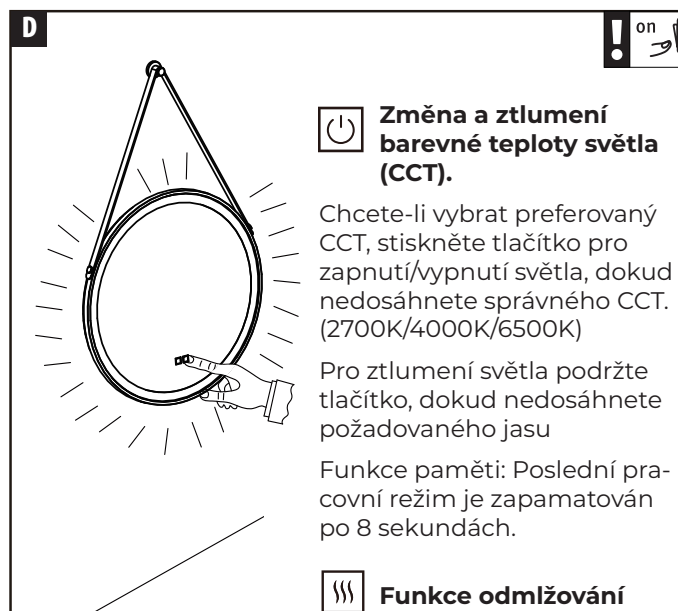
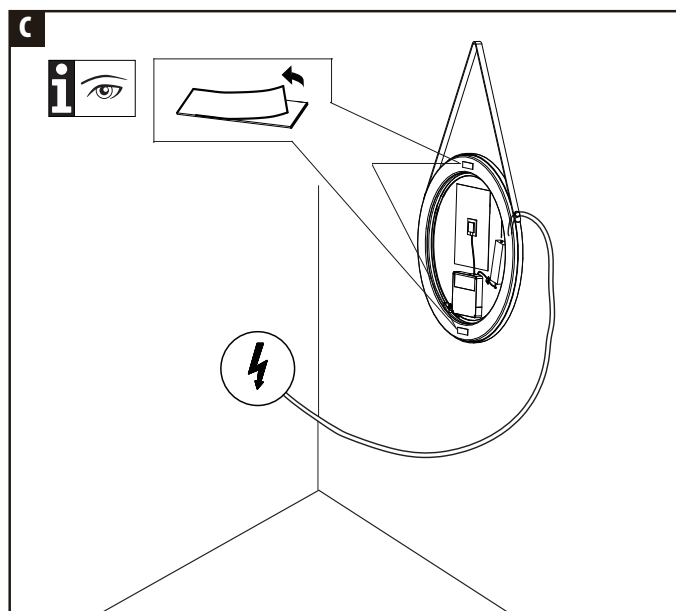
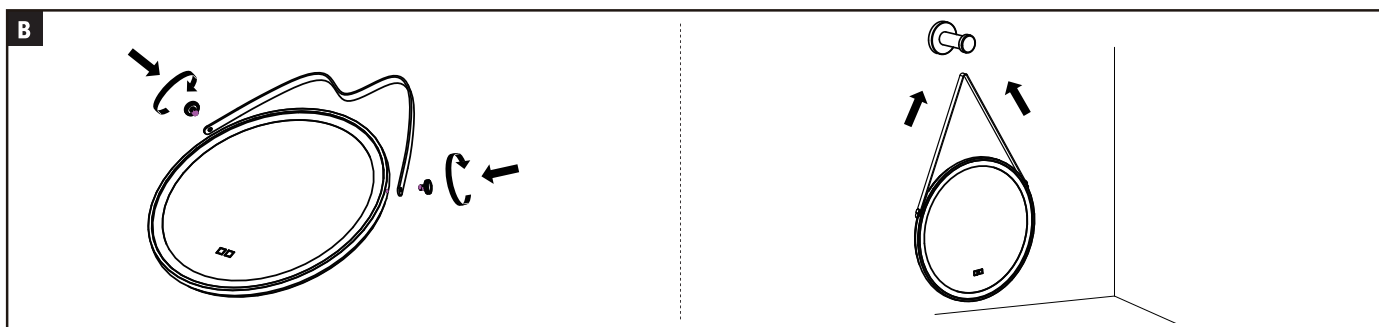
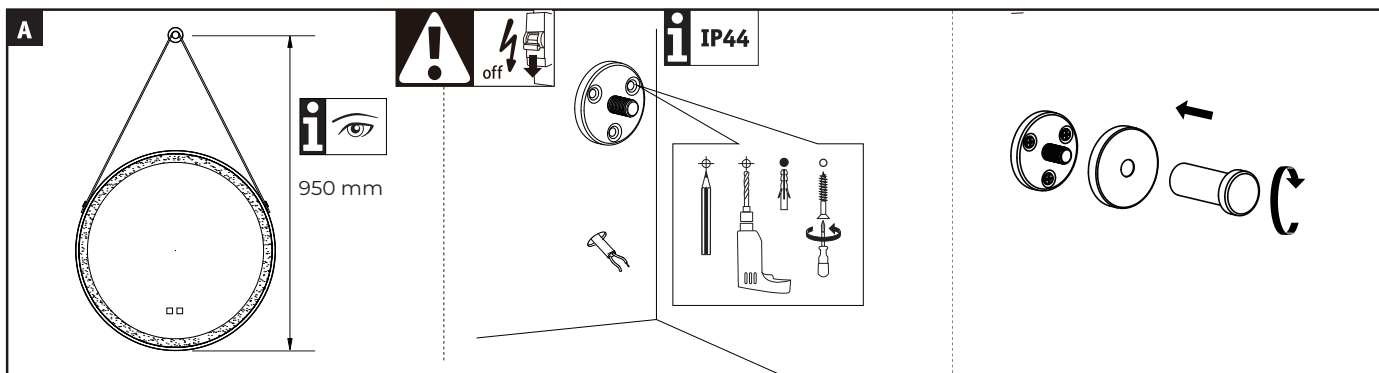
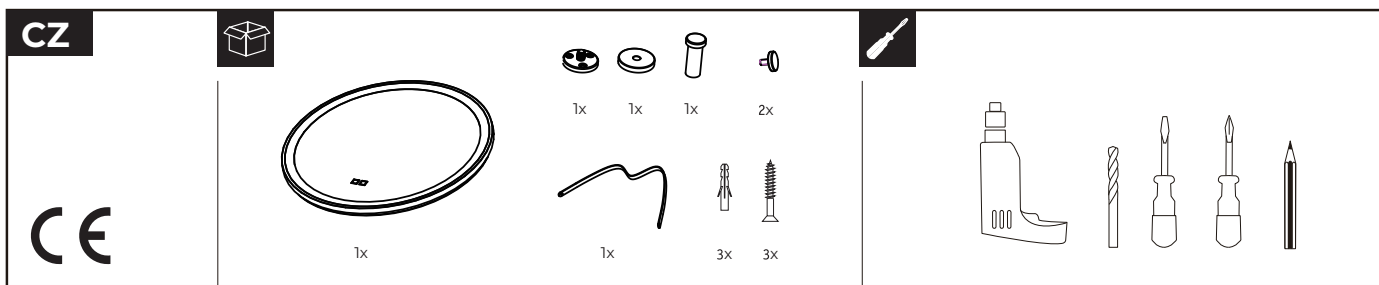
**Entfeuchtungsfunktion**

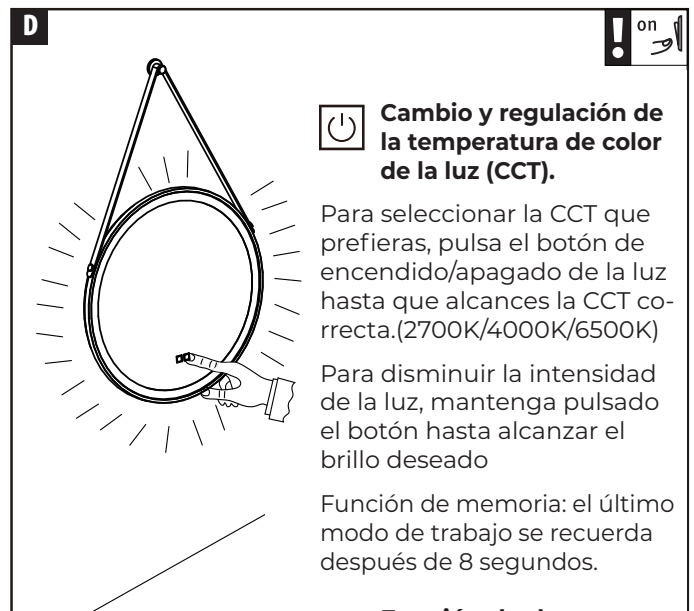
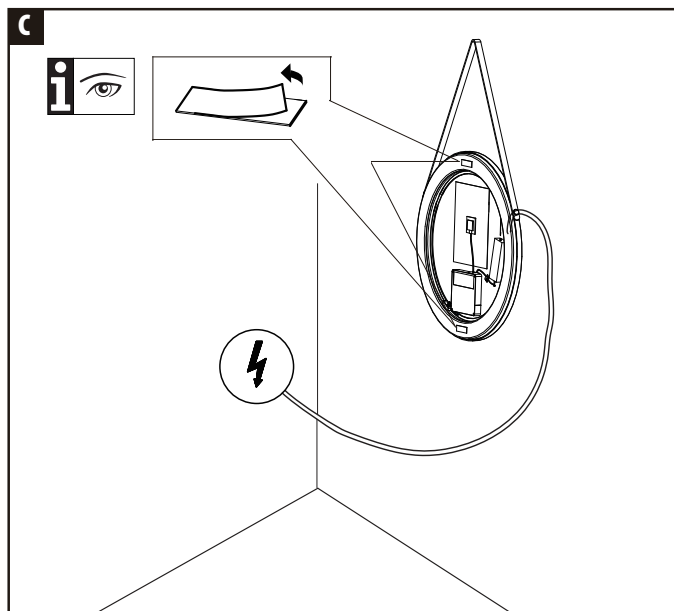
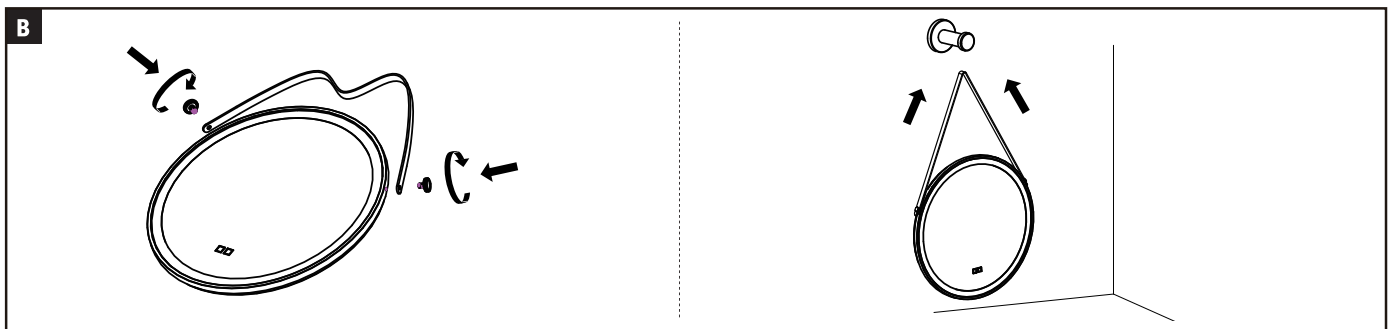
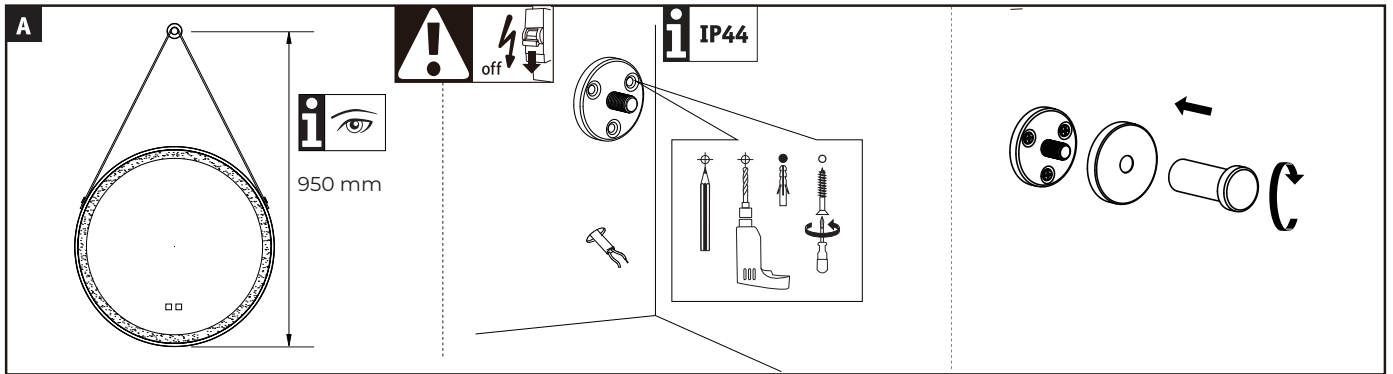
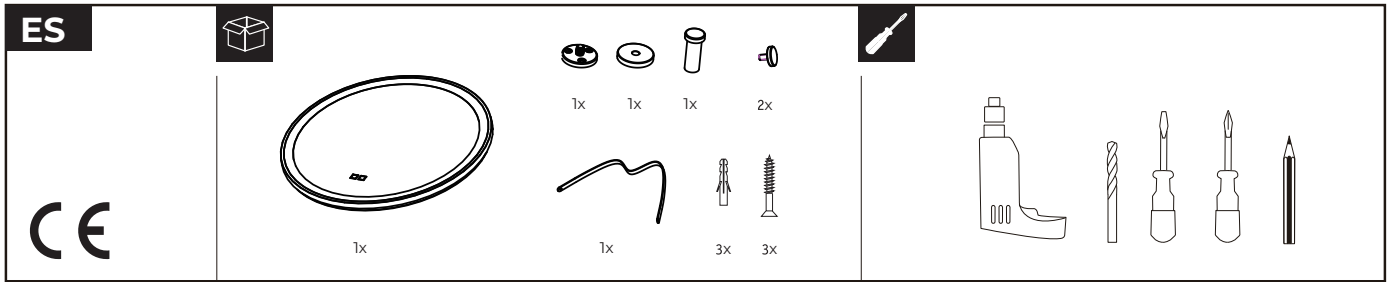
Einschalten von Entnebler (kurzes Drücken)  
 Ausschalten von Entnebler (kurzes Drücken)  
 Der Entnebler schaltet sich nach 30 Minuten automatisch aus.

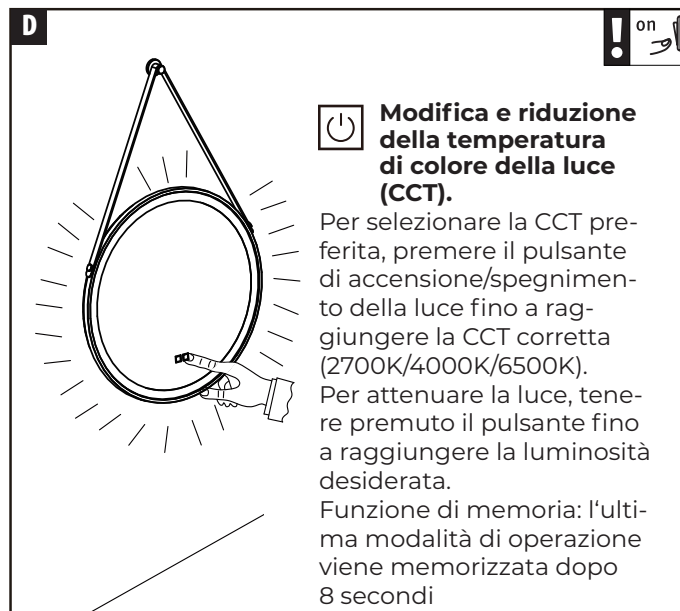
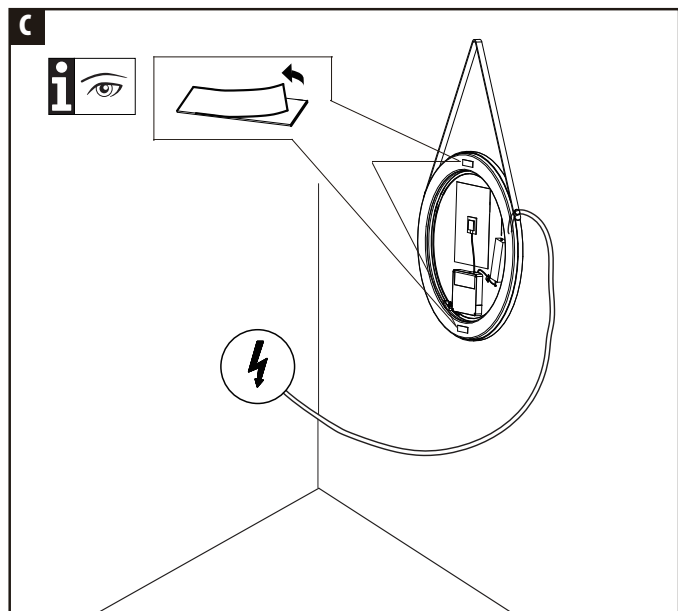
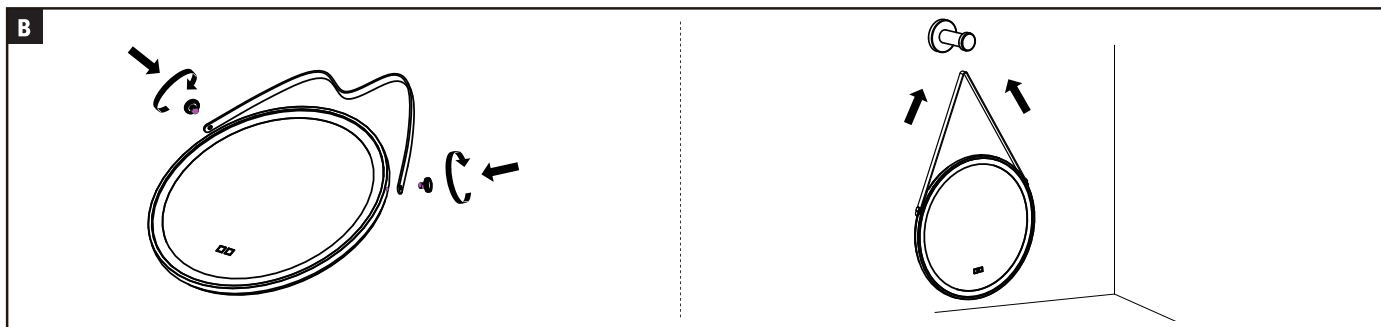
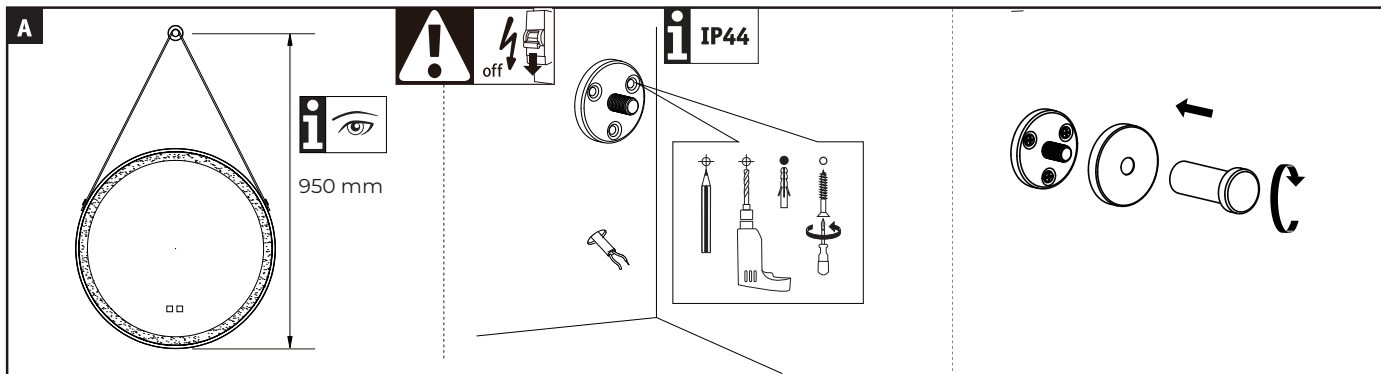
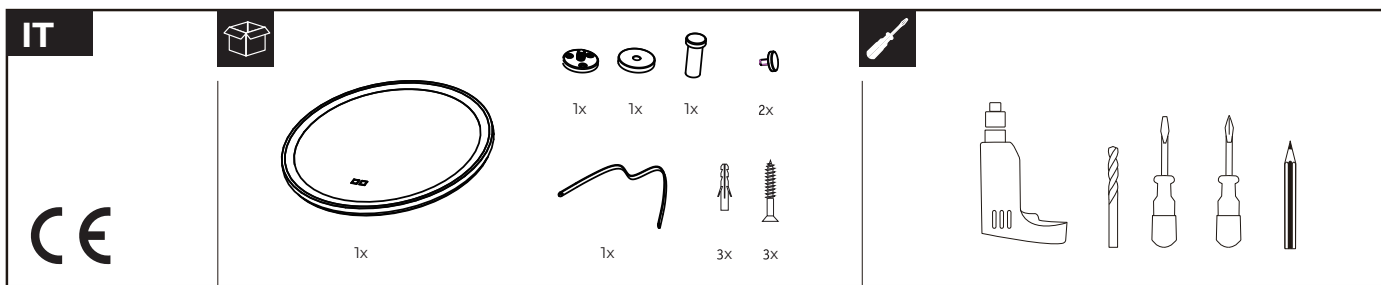



**Désembueur**

Désembuage activé (pression courte)  
 Désembuage désactivé (pression longue)  
 Le désembueur s'éteindra automatiquement après 30 minutes.







 **Funzione di sbrinamento**

Accensione dello sbrinatori (pressione breve)  
 Spegnimento dello sbrinatori (pressione breve)  
 Lo sbrinatori si spegne automaticamente dopo 30 minuti.

